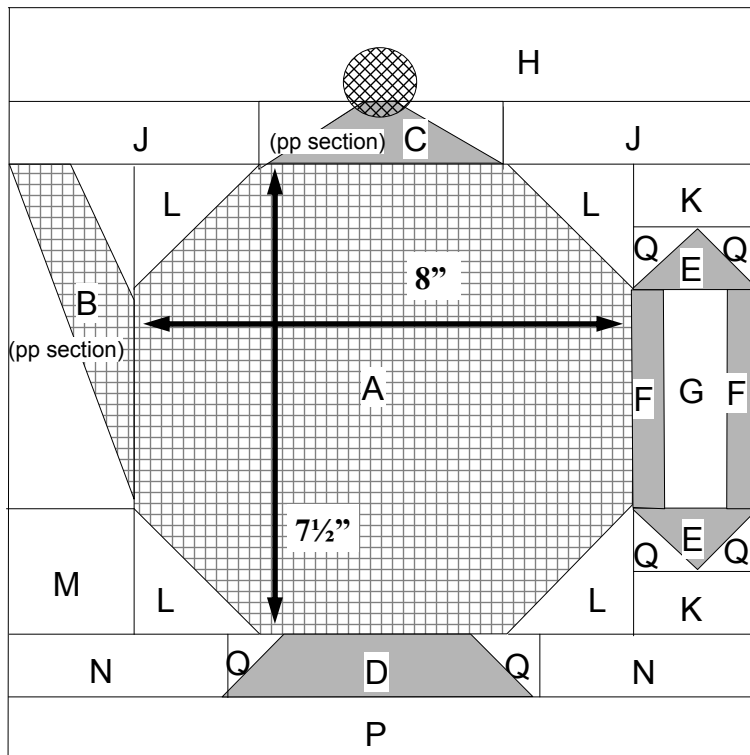


China Teapot Block

12" x 12" finished size



Instructions:

Teapot Body: Line up piece L with the corner of A, right sides together. Sew diagonally from corner to corner on L. (Fig. 1) Flip open and press. Trim excess fabric. Repeat on all the other corners of A. The finished piece will resemble a Snowball block.

Spout: Cut out section B to foundation paper piece the spout and its two background sections. Place piece B **right side up**, on the back side of the foundation, making sure that the piece completely covers the section with some overlap for the seam allowance. Pin. Place a piece of background **right side down**, on top of B, overlapping the seam line B1. This piece should be large enough to cover the background section and seam allowance when sewed and flipped open. Flip over so paper side is up. Sew on line B1. If you are unsure that the piece is big enough, use a long stitch when sewing it the first time, so you can check the size and remove if necessary. Once you are certain, sew with a smaller stitch length than normal, as this will make the paper easier to remove later. Once sewn, press background open. Trim seam allowance between piece B and the background to 1/4". Repeat using another background piece, sewing on line B2. Press open. Trim section to size.

Lid: Using the same procedure as above, foundation piece section C. Place piece C **right side up**, on the back side of the foundation, making sure that the piece complete covers the section with some overlap for the seam allowance. Pin. Place a piece of background **right side down**, on top of C, overlapping the seam line C1. Sew on line C1. Trim seam allowance and press open. Repeat for sewing on line C2. Trim and press. Trim section to size.

Bottom: On piece D, put a piece Q lined up with a top corner of D, right sides together. Sew diagonally from corner to corner on Q. Flip open and press. Trim excess fabric. Repeat on other top corner of D, sewing in other direction.

Handle: Put a piece Q lined up with a top corner of E, right sides together. Sew diagonally from corner to corner on Q. Flip open and press. Repeat on other top corner of E, sewing in other direction. Trim excess fabric. It should resemble a Flying Geese block when complete. Sew 2.

Complete assembly of the block as shown in the diagram. **Be sure you have the body piece aligned with the longer side horizontal.** Press all seams to the darkest fabric. Gently remove paper from block, after completion. Add a decorative button for the top knob.

Fabric:

Teapot Body and Spout

- Medium to large scale print

1 A — 8 1/2" x 8"

1 B — 6" x 2 1/2" paper pieced section

Teapot Lid, Bottom and Handle

- Solid coordinate

1 C — 4 1/2" x 1 1/2" paper pieced section

1 D — 5 1/2" x 1 1/2"

2 E — 2 1/2" x 1 1/2"

2 F — 4" x 1"

Background

- White on white print

1 G — 4" x 1 1/2"

1 H — 12 1/2" x 2"

2 J — 4 1/2" x 1 1/2"

2 K — 2 1/2" x 1 1/2"

4 L — 2 1/2" x 2 1/2"

1 M — 2 1/2" x 2 1/2"

2 N — 4" x 1 1/2"

1 P — 12 1/2" x 1 1/2"

6 Q — 1 1/2" x 1 1/2"

Scraps for paper piecing

Spout and Lid are foundation paper pieced. See sections below.

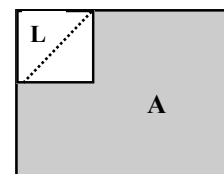
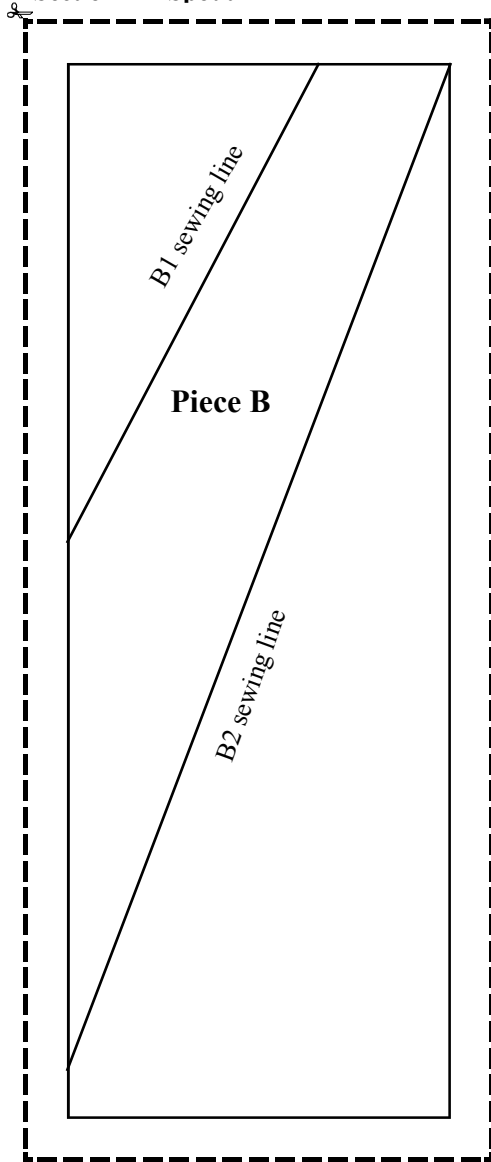


Fig. 1

Section B—Spout



Section C—Lid

